

Kurt J. Lesker Company

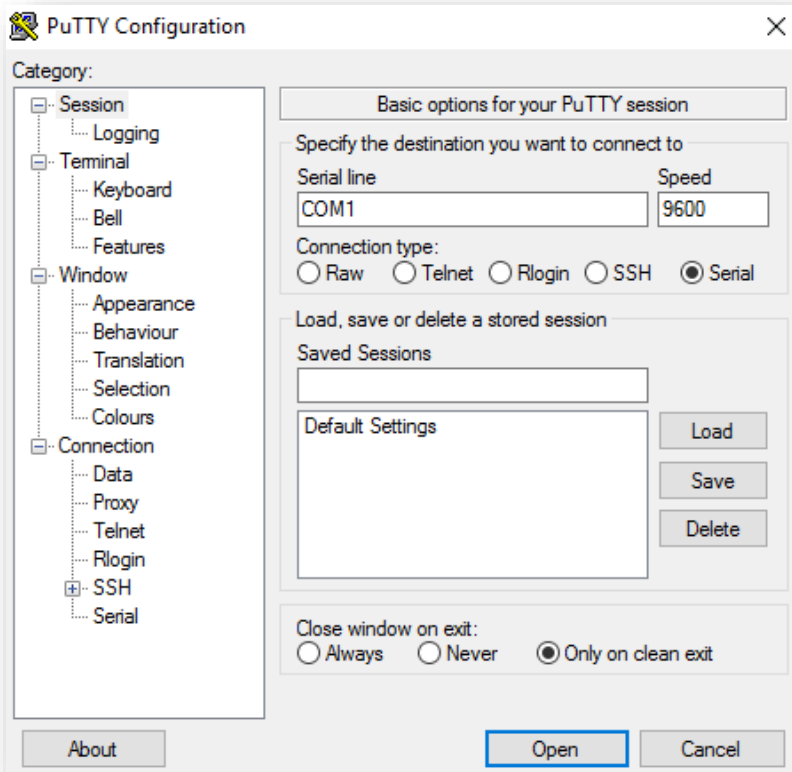
Thank you for your purchase of the Kurt J. Lesker Model 615 Ethernet digital vacuum gauge. This addendum will demonstrate how to...

- Monitor and communicate with your vacuum gauge from a remote computer
- Set the IP address to one compatible with your network (if needed)
- Configure recent versions of Java so the applet can be properly displayed

The KJL615 digital vacuum gauge with Ethernet is equipped with a port that, when plugged into your switch with a standard network Cat5e cable, will enable you to observe the gauge's vacuum readings via a browser window from any computer connected to your network, which is especially useful for processes in which the gauge and product must be isolated or contained.

There are two ways to monitor the gauge: via standard RS232/serial connection to your computer, or via Ethernet. Please note that the gauge cannot be monitored by RS232 and Ethernet concurrently. If both are plugged in, neither will work reliably.

To read via RS232, first connect the RS232 cable included with your gauge to your computer. Then load the software included with your gauge and run the included program, Putty. This screen will appear...



Select Serial, and note which COM port your RS232 cable is using (in this case, COM1). This can be determined by accessing Control Panel > Hardware and Sound > Devices and Printers, which will display a list of all devices connected to your computer via USB.

Connect the RS232 cable to the connector on the back of your gauge. Power up the gauge, and click Open on the Putty menu.

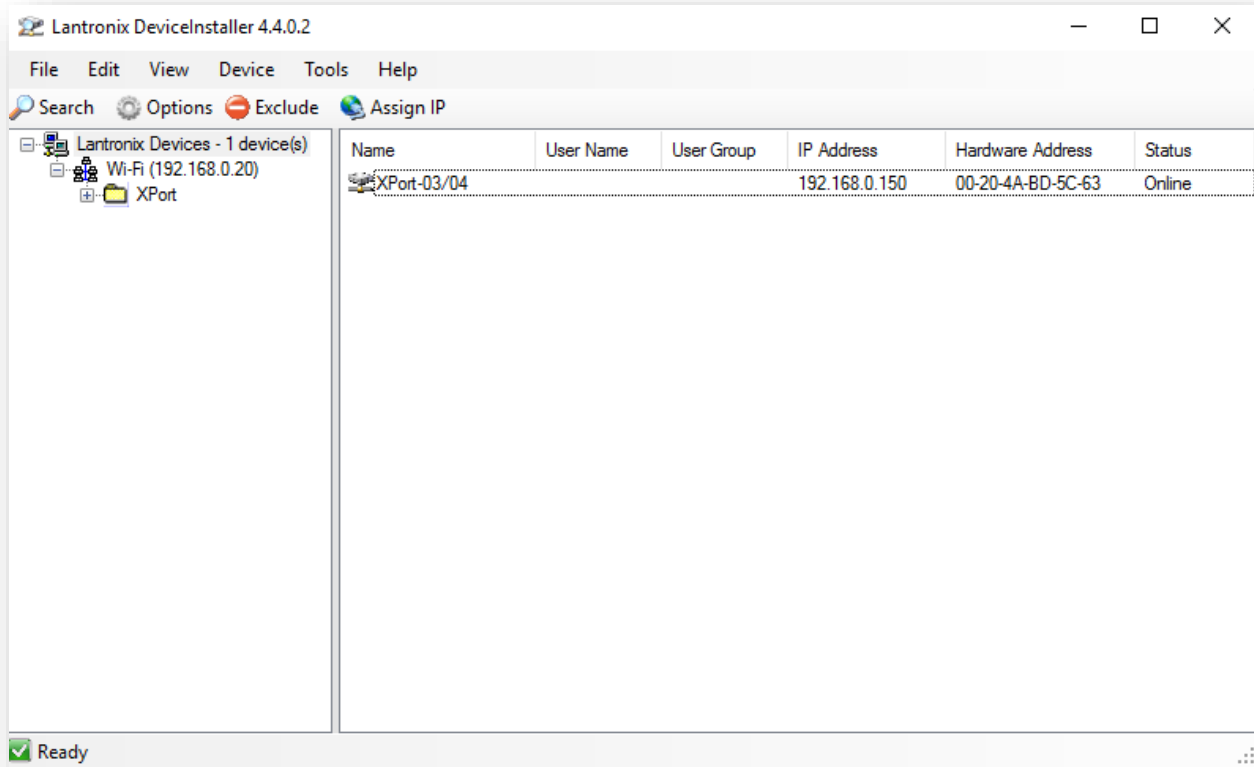


PuTTY will display the gauge's reading about once a second. Consult the PuTTY user guide for assistance in changing the readout font and size.

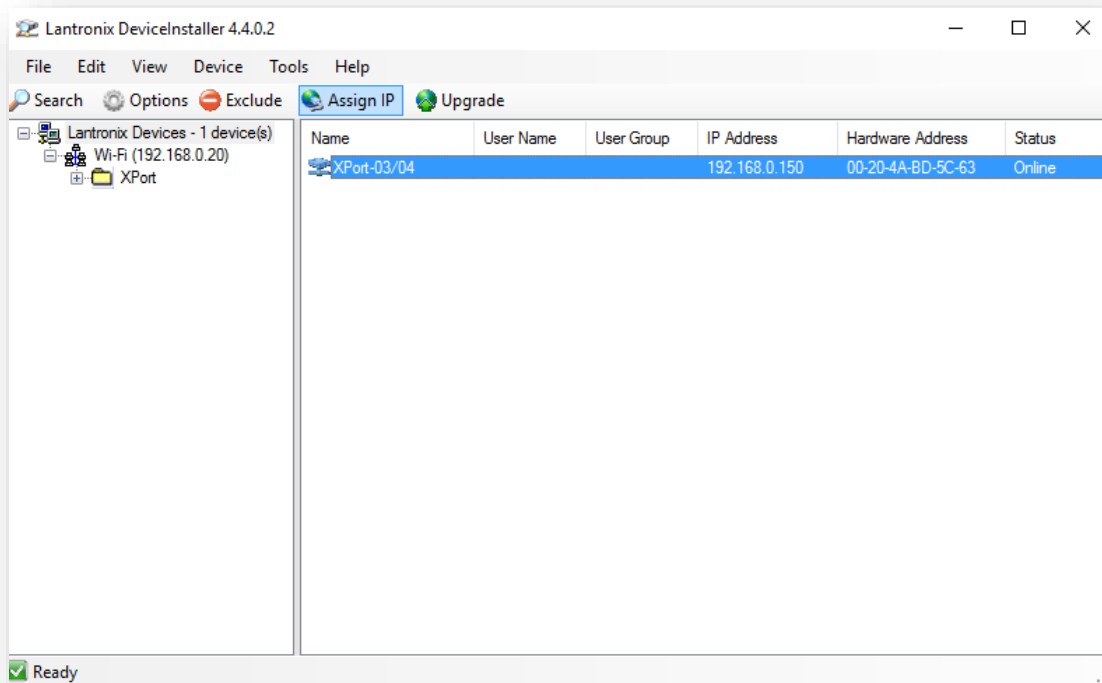
The gauge readings may also be monitored remotely via Ethernet. Start by connecting one end of the blue Ethernet cable (included with your gauge) to the port on the gauge and the other to your network connection or Ethernet switch. The gauge's IP address is set at the factory for 192.168.0.201 by default. If this subnet mask is acceptable and there are no other conflicting IP addresses, skip to the section "Enabling Ethernet & Remote Applet Viewing with Current Versions of Java". If multiple Ethernet gauges were ordered, consult the IP address on the sticker on the bottom of the gauge. If you choose to change the IP address of your unit, you may do so via Lantronix Device Installer as instructed here.

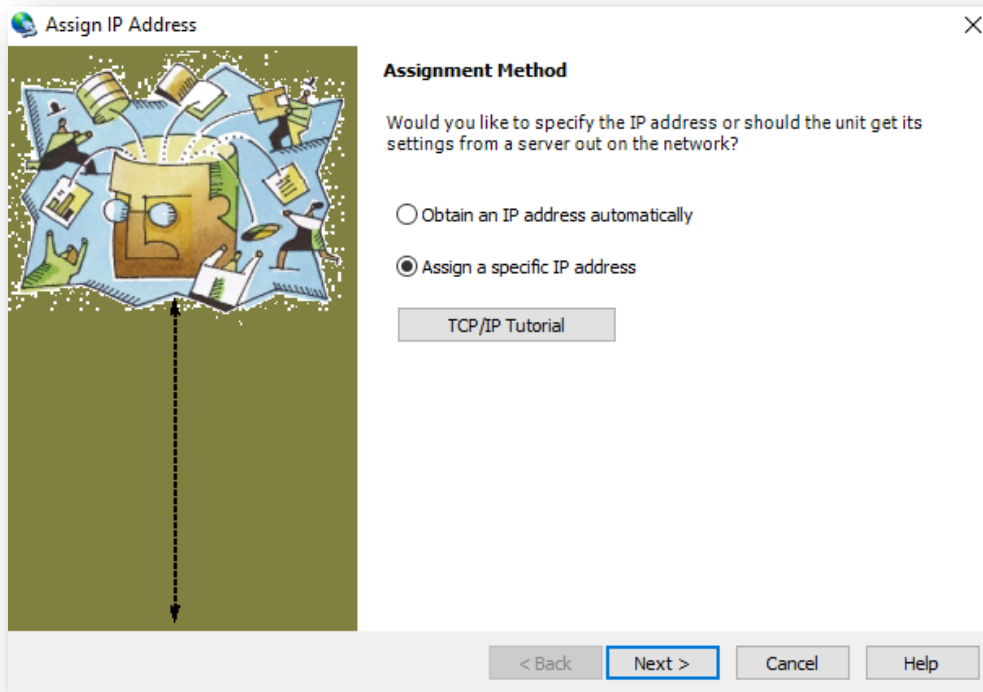
How to Change the IP Address of your Gauge

Start by downloading the latest version of Lantronix Device Installer (can be found at <http://www.lantronix.com/products/xport/#docs-downloads>). Plug one end of the blue Ethernet cable into the back of the gauge and the other end to your modem. Open Lantronix Device Installer. The program will automatically search your network for devices connected to the Internet.

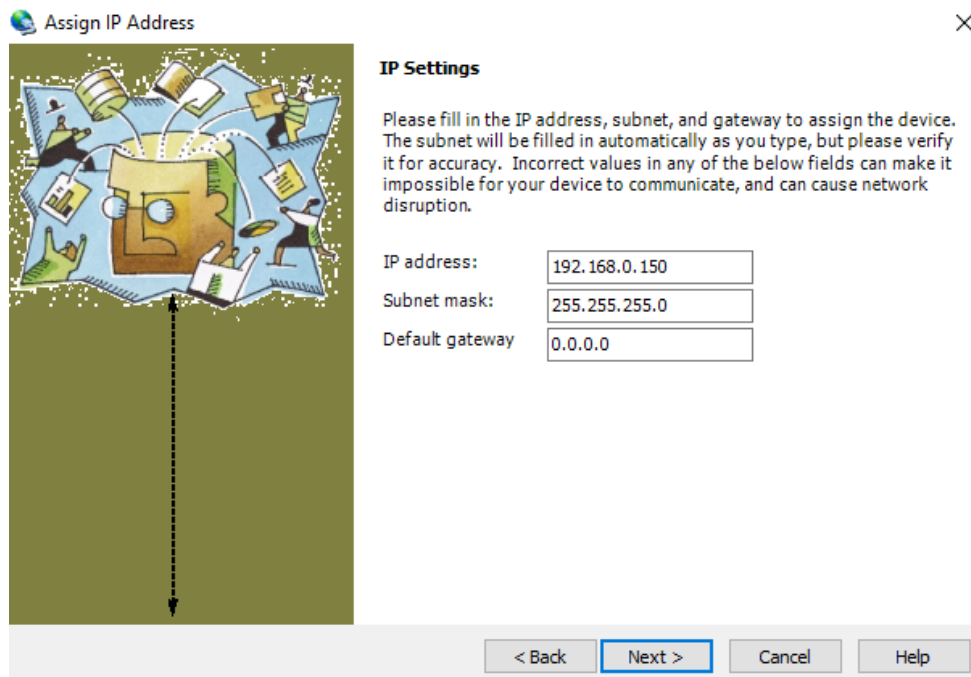


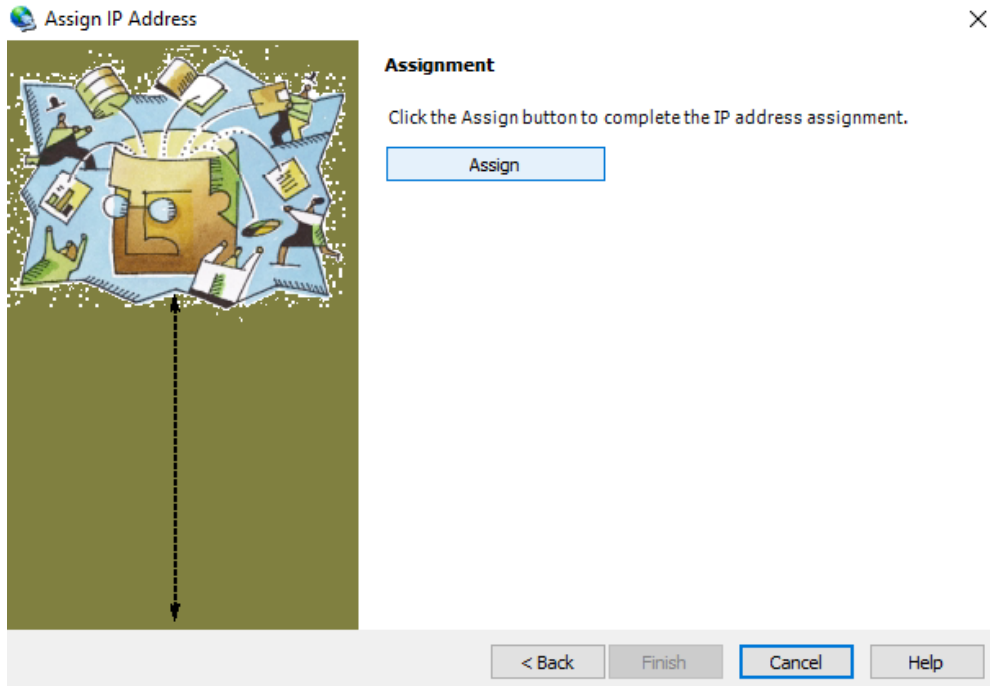
Highlight the XPort device and click Assign IP.





Obtain an IP address, Netmask and gateway from your network administrator. For small locally managed networks, use an unused IP address, a Gateway of 255.255.255.0 and Gateway address of x.x.x.1 (the same first three numbers as your unused IP address).





Click Assign, and the IP address of your gauge has been successfully changed.

Enabling Ethernet & Remote Applet Viewing with Current Versions of Java

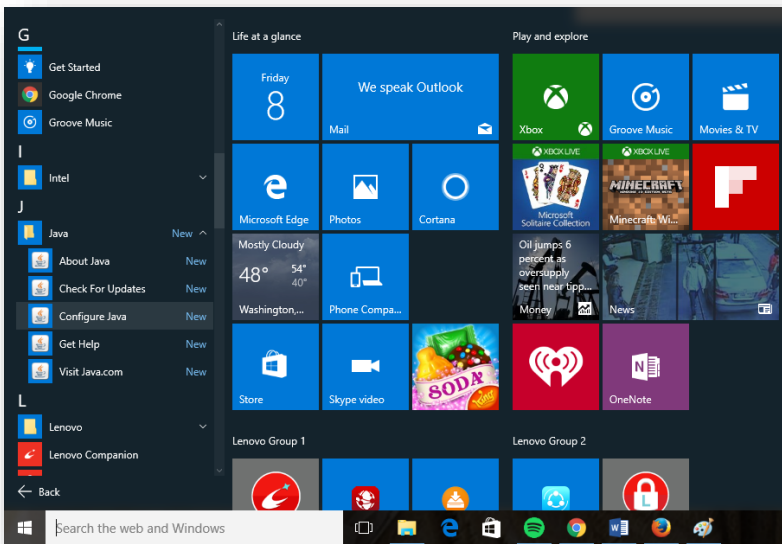
With recent updates, Java has increased its security settings and rendered the gauge ethernet applet inaccessible. In the past, a third-party Java applet signed with an expired certificate would show an "Untrusted" error message and block the applet from running, but the user could continue loading the applet after the security prompt. Now, all applets deemed "untrusted" by Java are automatically blocked with no way to override.

All Kurt J. Lesker Ethernet-enabled units have an IP address assigned to them, and an applet programmed into the module itself. By surfing to this IP address, the user can read vacuum remotely through their browser using the applet.

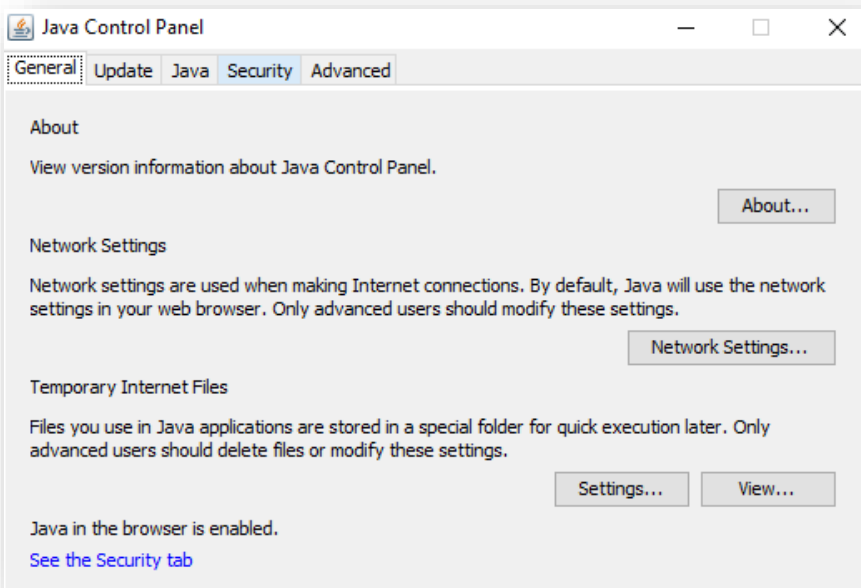
This addendum will describe how to enable the Kurt J. Lesker applet monitoring via Ethernet using Windows 10 with more recent versions of Java. This process works by adding the IP address of your unit to a "safe list", allowing you to view the applet through your browser as intended.

First download the Mozilla Extended Release Browser which can be found at <https://www.mozilla.org/en-US/firefox/organizations/all/> . **Be sure to download the 32-bit version of the browser as Java is no longer compatible with the 64-bit version.** As of this publication, other web browsers have discontinued support for the ethernet applet, which will undergo software revision shortly. Then ensure you are using the most recent Java Update. Note: Reinstalling older versions of Java to circumvent the security settings will not work; the version **must** be current!

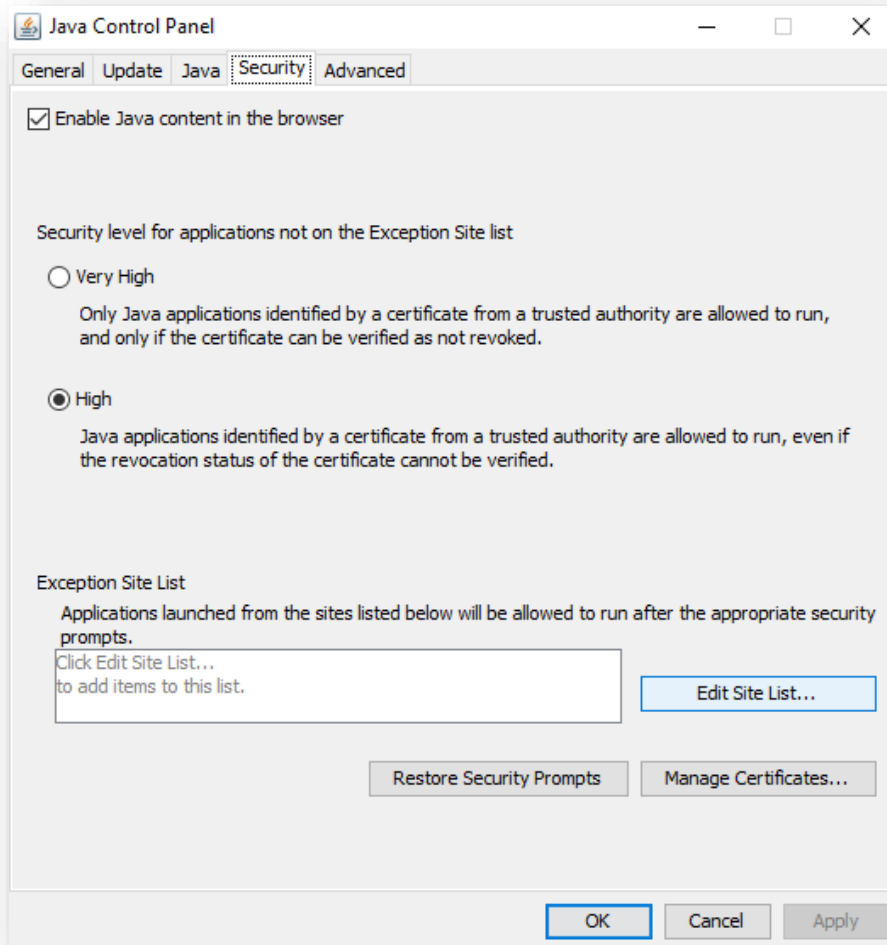
Begin by opening the Start menu in the bottom-left corner of your screen. Then click All Apps at the bottom left, and scroll to Java / Configure Java.



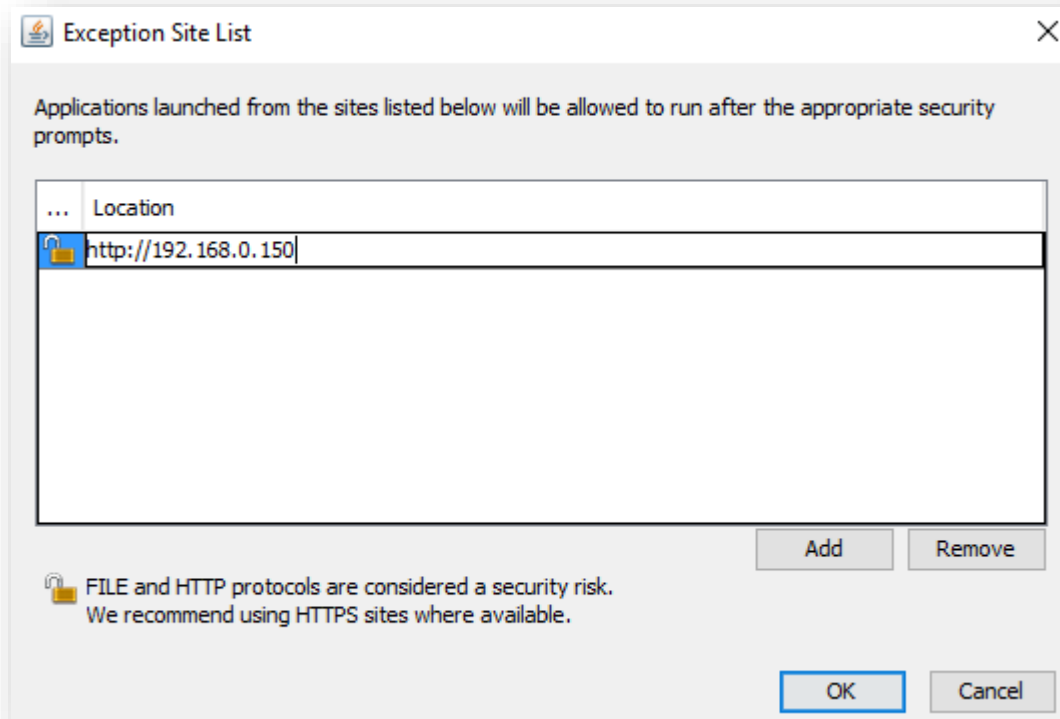
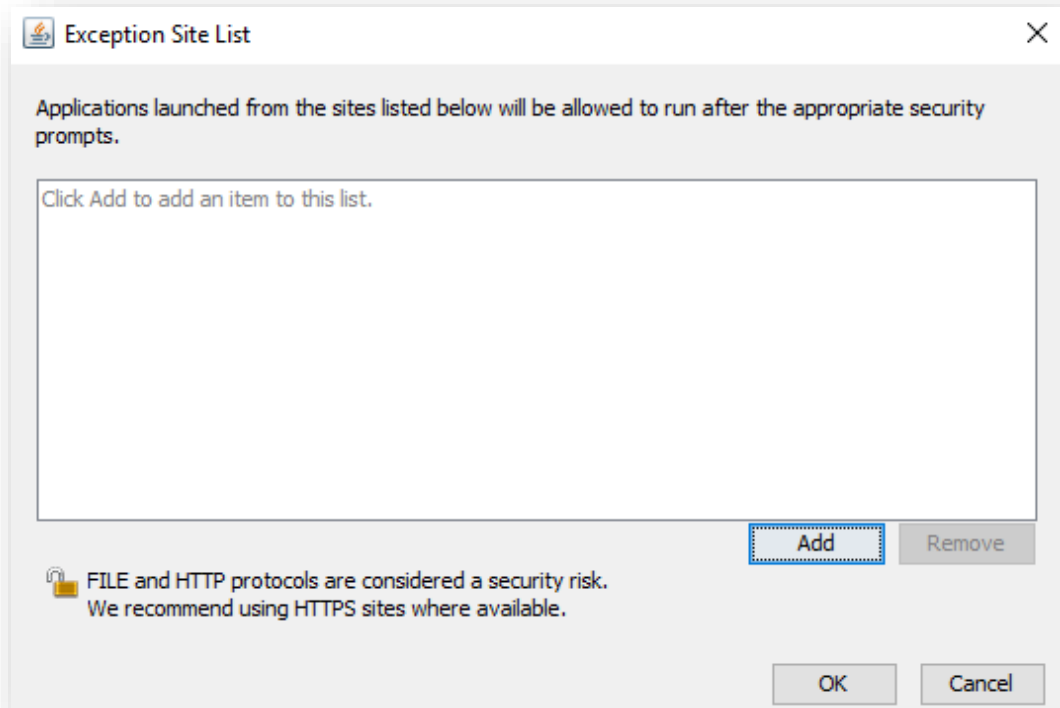
Click the Security tab to start.



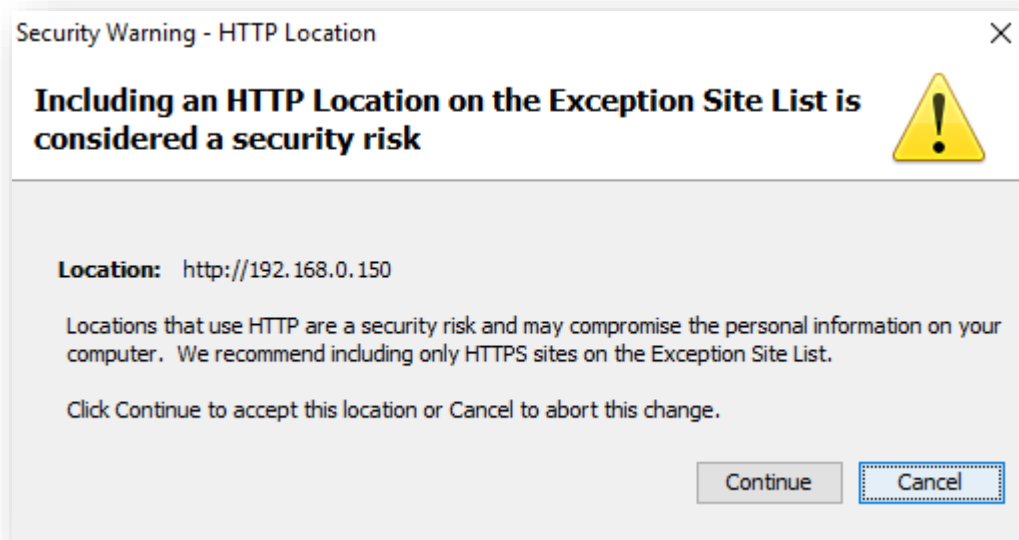
Then click Edit Site List to add your device's IP address to the "safe list". The IP address can be found printed on a sticker on the bottom of your unit. The IP is typically set at the factory as 192.168.0.201 .



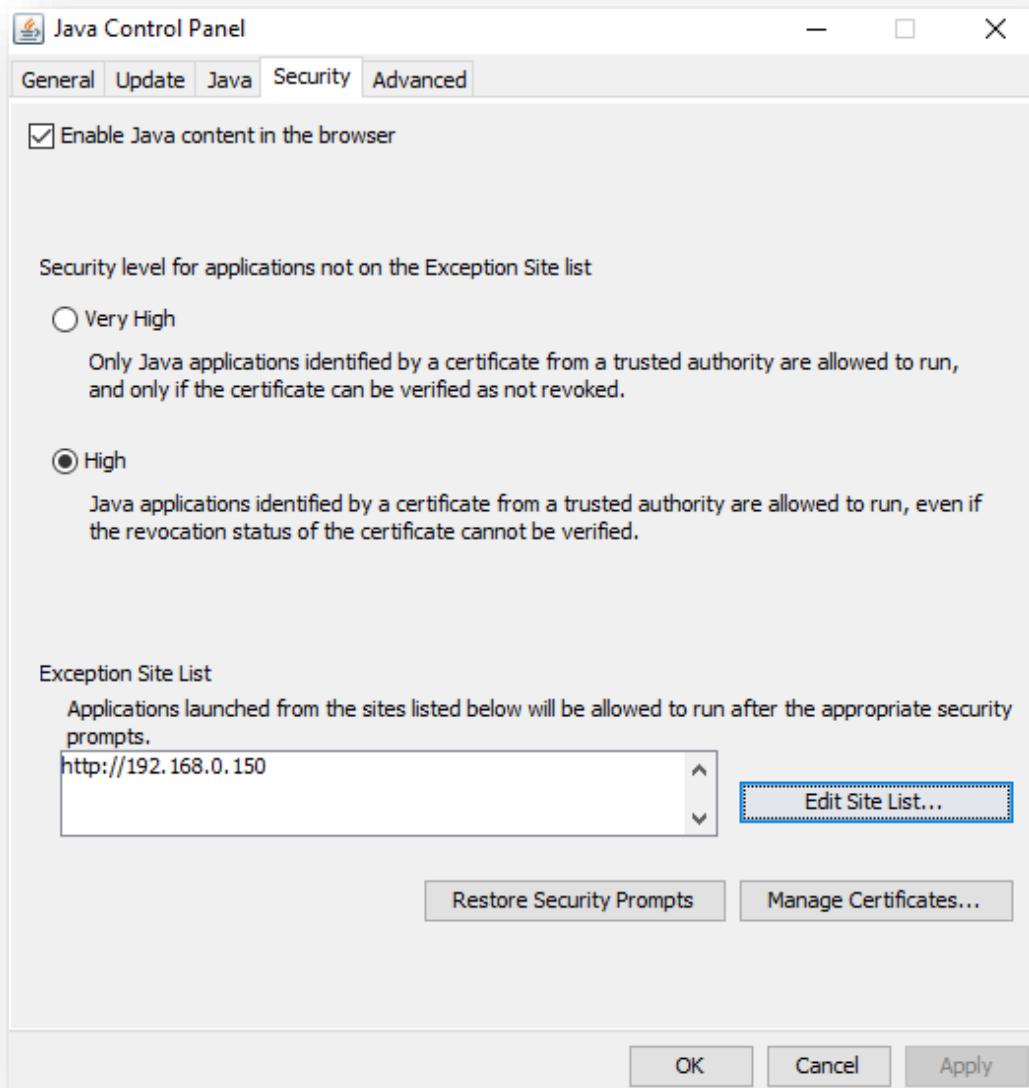
The IP address of the sample unit used for this demonstration is 192.168.0.150. Make sure to start the address with **http://** as Java will not recognize it as a webpage otherwise.



A security warning will appear, recommending that only HTTPS sites be allowed on the Exception Site List. Feel free to continue and ignore this as the IP address associated with your unit is not an HTTPS site.

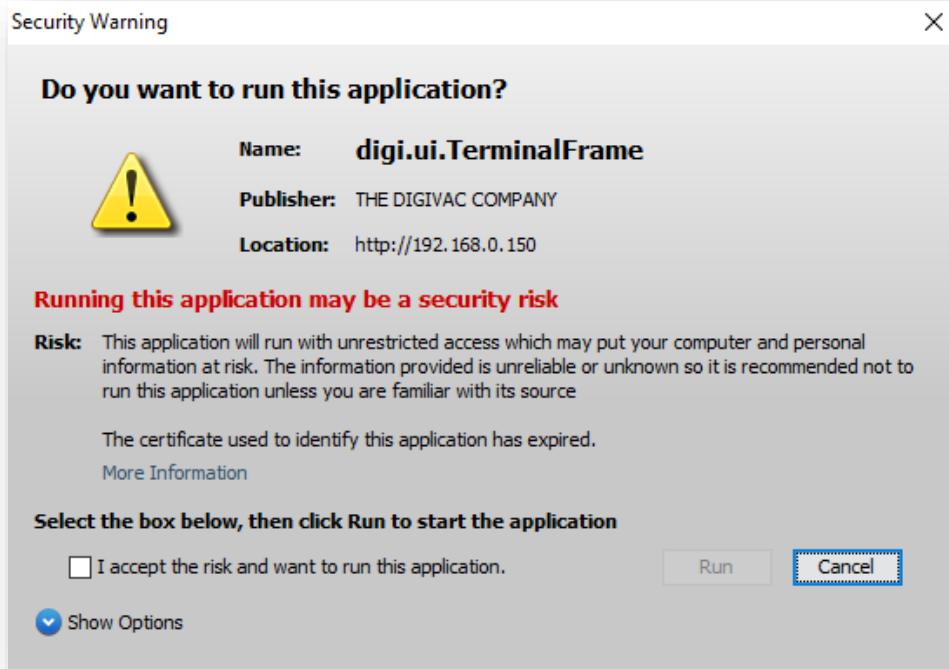


Your IP address has been successfully added to the Exception Site List. Click OK to finalize, or repeat the process to add multiple IP addresses if you have more gauges you'd like to view.

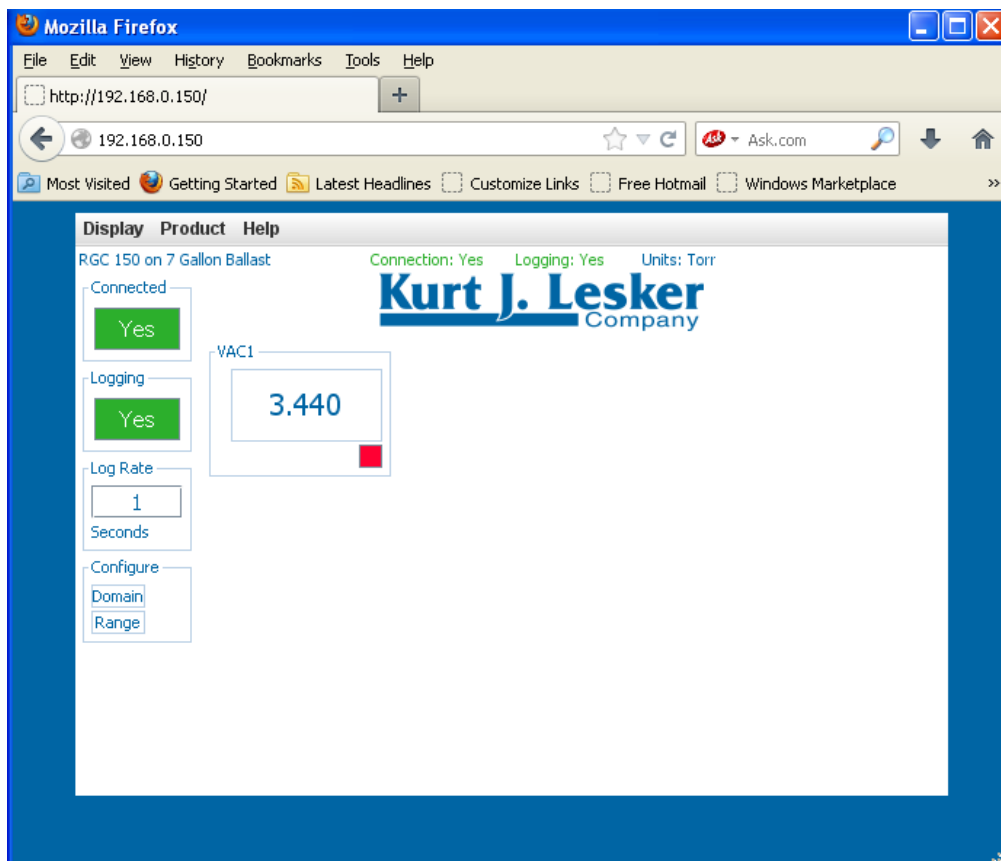


You're now ready to view your Ethernet-enabled gauge via your browser.

Close all browser windows, then reopen Firefox. Type the IP address of your unit into the address bar. Another security warning will appear. Check the box and run the application.



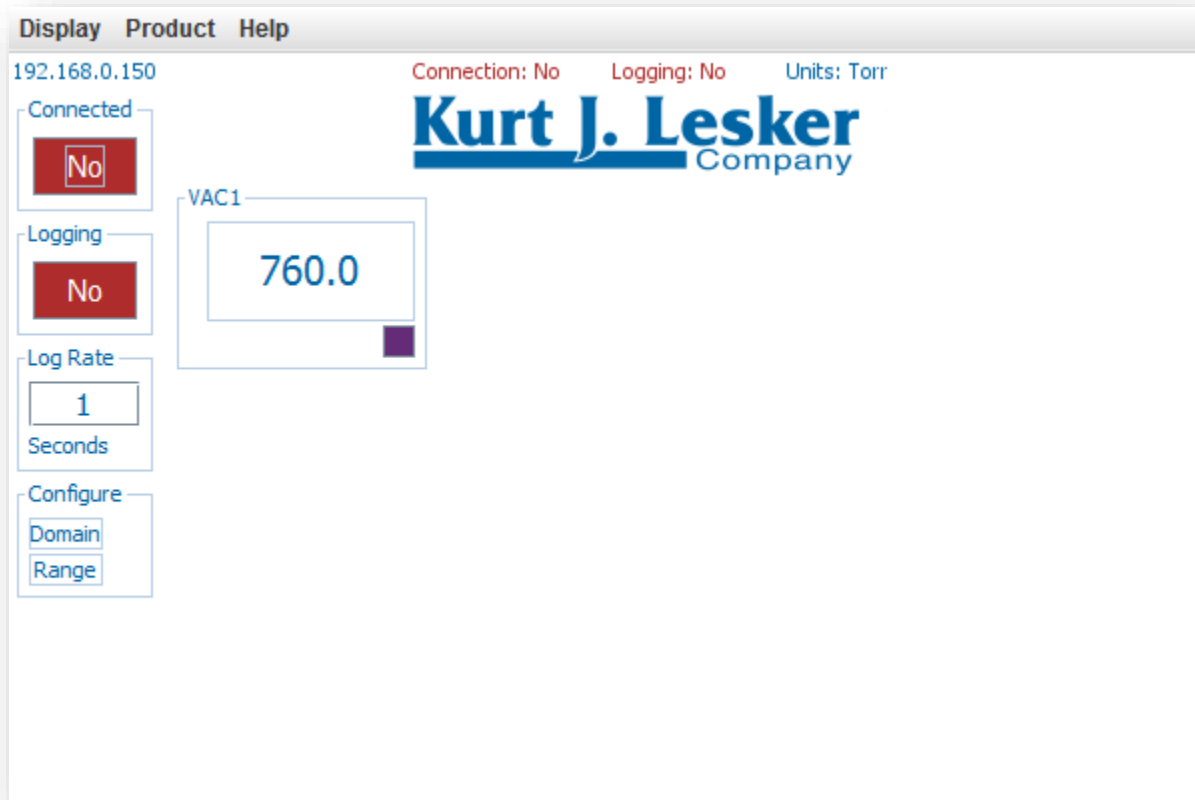
Success!



You are connected to the applet and are now reading vacuum through your browser.

Troubleshooting

If your browser doesn't display the applet, or the applet shows no connection as shown below...



...ensure the following:

- You've added the correct IP address to the Exception Site List.
- The IP address was not changed by your IT department.
- You've saved your changes after adding the IP address to the Exception Site List.
- You are using the blue Ethernet cable to connect the unit from the Ethernet port to your modem.
- Your network is functioning properly and you are connected to the internet.
- You are using the most recent version of Java and the Mozilla Firefox Extended Release Browser.
- You have closed all browser windows before visiting the IP address.

If your connectivity issues persist, contact the Kurt J. Lesker Company for technical support.