



**EBARA**

# EBARA Dry Vacuum Pumps

Model EV-A / EV-SA

**Innovative Technology.**

Compact Air Cooled Dry Vacuum Pump



# EBARA EV-A / EV-SA

The EBARA EV-A and EV-SA series air-cooled dry vacuum pumps have industry-leading specifications. The non-contact, multi-staged roots is designed for reliable, particle-free vacuum generation. Typical applications include load locks, analytical instruments and metrology equipment that require the best vacuum performance and optimum uptime.

Small form factor and air cooling makes facilities hook up easy. The smart choice for applications requiring clean and contamination free environments.




Model EV-SA20


Ideal for Replacing:

Wet pumps - No more frequent oil changes or costly rebuilds

Scroll pumps - Eliminate the hassle of tip seal and bearing changes, base pressure drift

## Features and Benefits

 Energy Efficient Air-Cooled Motors

 Low Noise / Vibration


 Class Leading Water Vapor Pumping

 Non-Contact Design

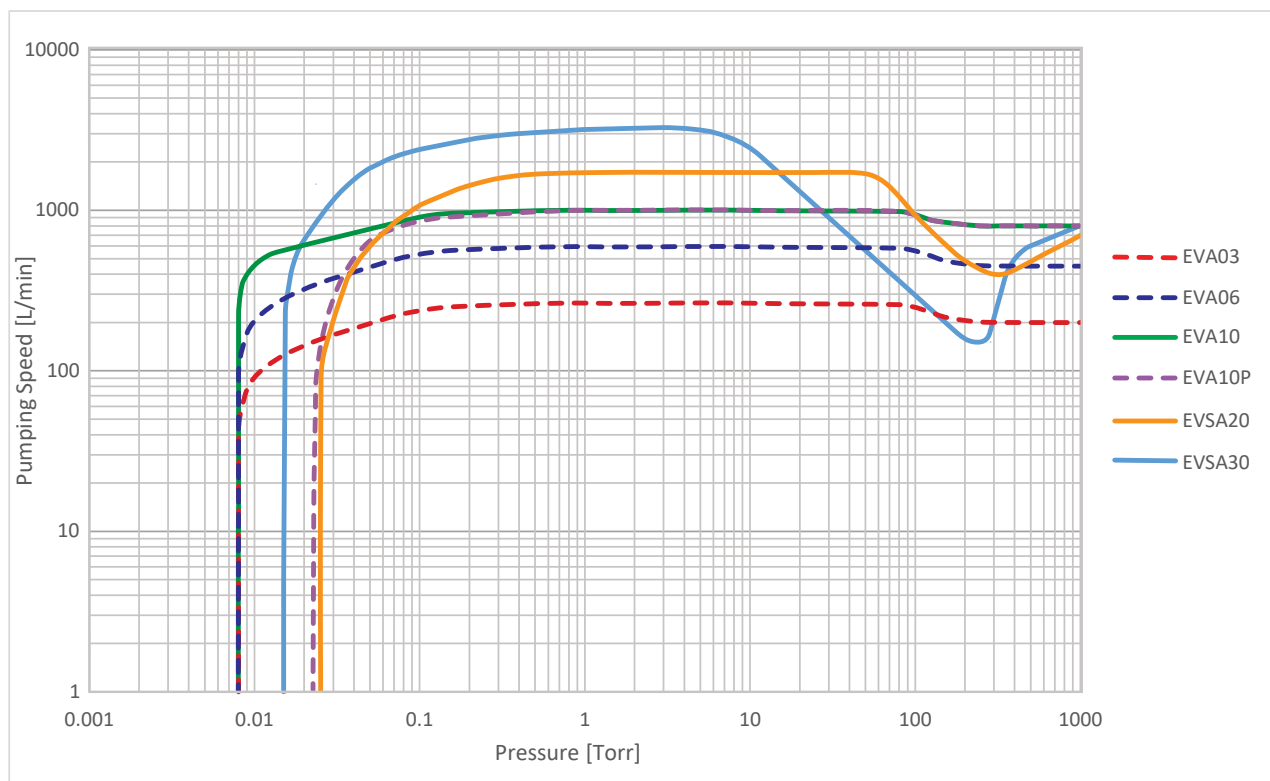
 High Atmospheric Pumping Speeds

 Maintenance Free

 Lowest Cost of Ownership

 Approved CE and NRTL Rated

# Pumping Curves



EV-A03



EV-A06



EV-A10P

## Accessories

### Solvent Traps



Water Vapor Traps



Silencer

### Remote Controller



Gas Ballast Valve

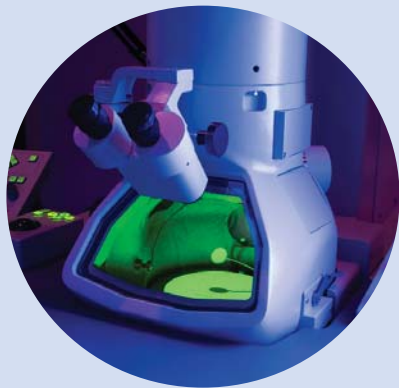
### Casters and Adjustors



Inlet Safety Valve

# Applications

## Instrumentation



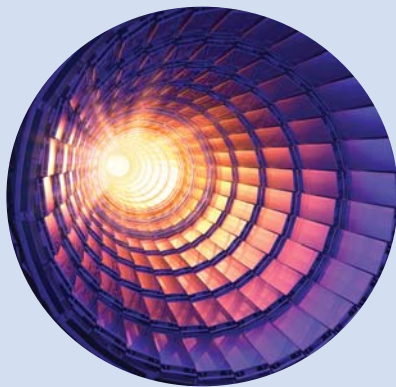
- Turbo Pump Backing
- Analytical Instruments
- Electron Microscopes
- Helium Leak Detection
- GCMS/LCMS Mass Spectrometry

## Industrial



- Glove Boxes
- Vacuum Ovens / Lyophilization
- Sterilizers
- Surface Treatment Plasma Systems
- High Purity Gas Cylinder Filling

## Academic & Research



- Space Simulation Chambers
- Lasers
- Beam Line & Synchrotrons
- R&D Labs
- Battery Technology Manufacturing

*And Many More Applications...*

# Specifications

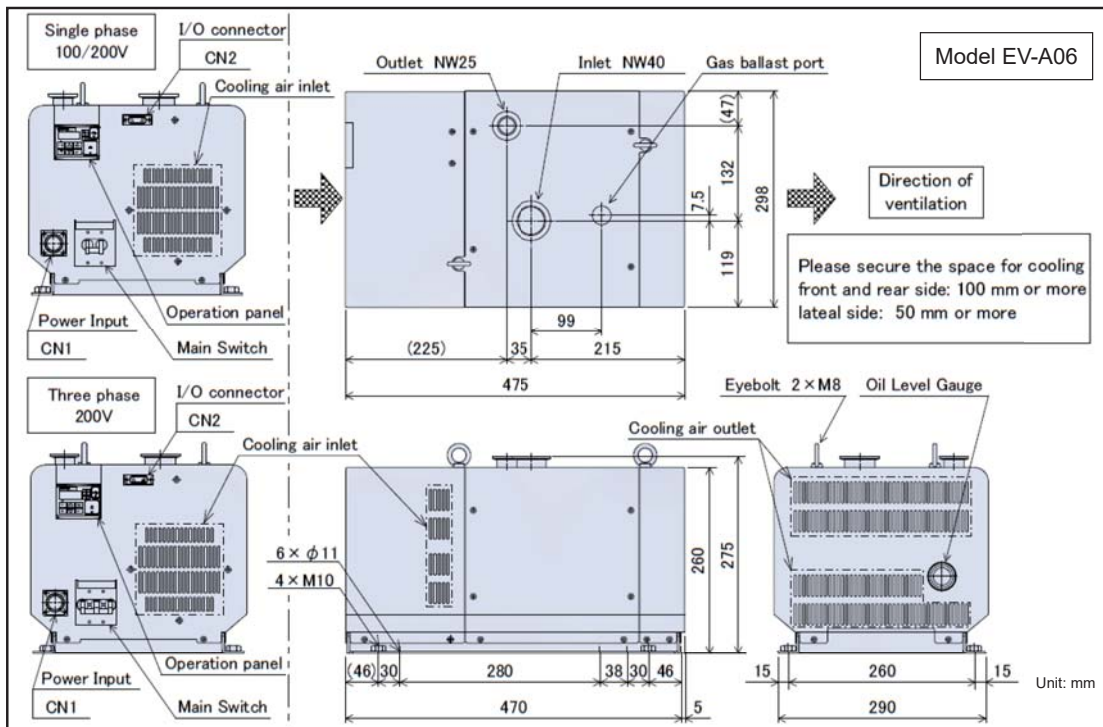
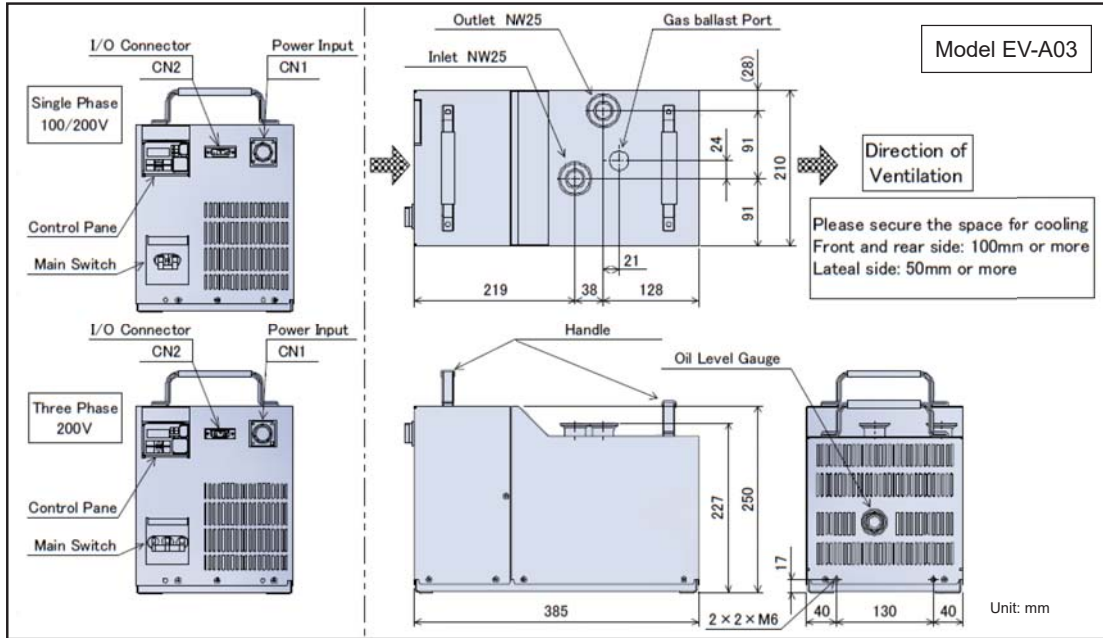
Model		EV-A03	EV-A06	EV-A10/P	EV-SA20	EV-SA30	
Pumping speed	Max.	L/min	250	600	1,000	1,670	3,300
		CFM	9	22	36	60	120
		m <sup>3</sup> /hr	15	36	60	100	200
Ultimate Pressure	Gas Ballast: Off	Pa	1.0			3.0	2.0
		mBar	0.01			0.03	0.02
		mTorr	7.5			22.5	15
	Gas Ballast: On	Pa	10.0		3.0	5.0	3.0
		mBar	0.1		0.03	0.05	0.03
		mTorr	<75.0		22.5	37.5	22.5
Max. Inlet Pressure		Atmospheric Pressure					
Max. Water Vapor Pumping Rate (Gas Ballast: On)		g/hr	250	350	500	100	30
Connection	Gas Inlet	NW25	NW40				
	Gas Outlet	NW25			NW40		
Approx. Power at Ultimate Pressure		kW	0.35	0.55	1.1	0.45	0.45
Approx. Weight		kg	23	54	75	65	90
		lb	51	119	165	143	198
Power Supply	[1 Phase/100V model]	1 Phase, 100-115V, 50/60Hz			-----		
	[1 Phase/200V model]	1 Phase, 200-240V, 50/60Hz					
	[3 Phase/200V model]	3 Phase, 200-240V, 50/60Hz					
Airborne Noise Test Data		dB (A)	<56	<57	<58		

## Application Example

EV-A10P set up for water vapor handling

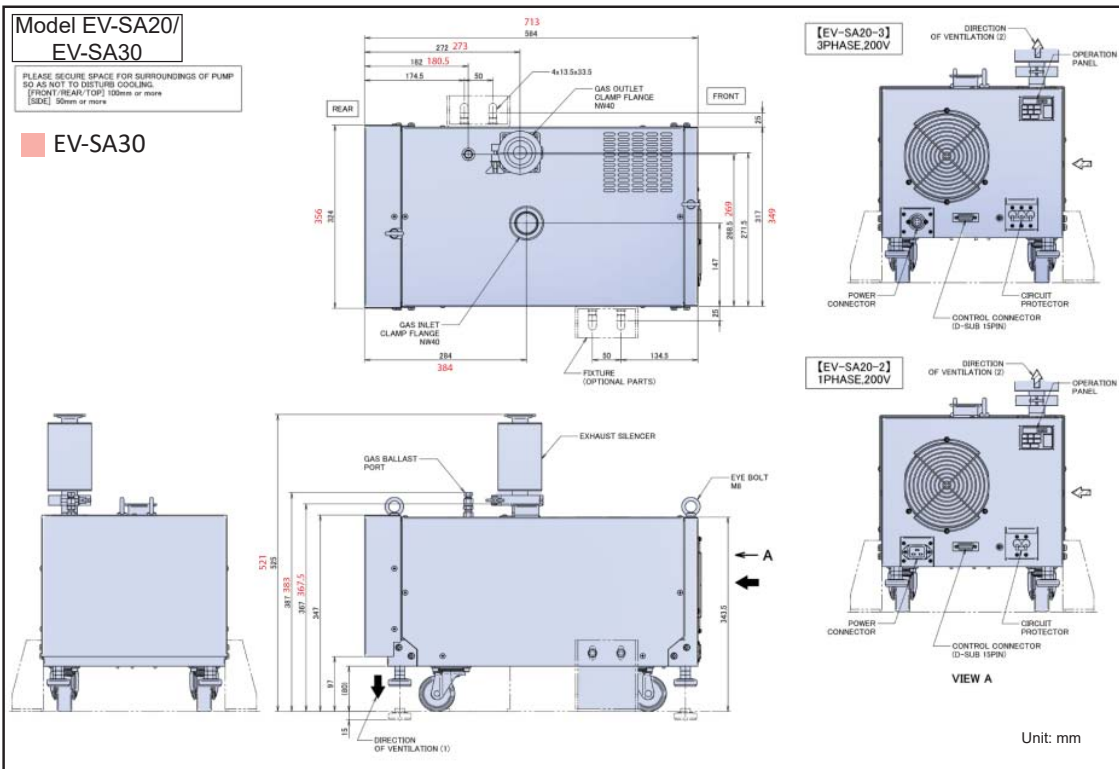
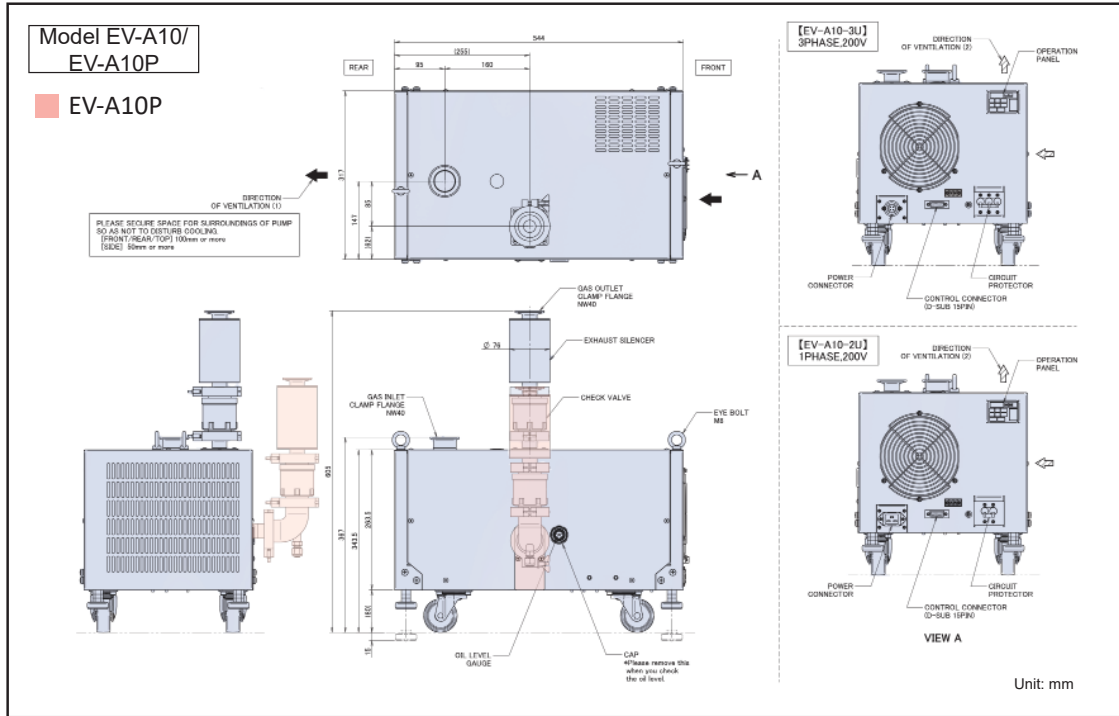


# Drawings



All specifications are subject to change without notice.

# Drawings



All specifications are subject to change without notice.



**EBARA Technologies, Inc.**

[www.ebaratech.com](http://www.ebaratech.com)

51 Main Avenue, Sacramento, California 95838 — Phone: 1-800-535-5376 Fax: 1-916-925-6654

**EBARA Corporation Precision Machinery Company**

[www.ebara.com/en/business/precision](http://www.ebara.com/en/business/precision)

2-1, Hon-Fujisawa 4-chrome, Fujisawa Kanagawa, 251-8502, Japan — Phone: 81-466-83-9000 Fax: 81-466-83-1100

**EBARA Field Tech. Corporation**

[www.eft.ebara.com](http://www.eft.ebara.com)

2-1, Hon-Fujisawa 4-chrome, Fujisawa Kanagawa, 251-8502, Japan — Phone: 81-466-83-9171 Fax: 81-466-83-1100

**GLOBAL NETWORK**

**U.S.A.**

EBARA Technologies, Inc  
Headquarters: Sacramento, CA  
FSC: Sacramento, CA  
QRC: San Jose, CA  
E. Fishkill, NY  
Hillsboro, OR  
Newburyport, MA

**EUROPE**

EBARA Precision Machinery Europe GmbH  
Headquarters: HANAU, Germany  
FSC: Livingston, UK  
QRC: Dresden, Germany  
Evry, France  
Meyreuil, France  
Kildare, Ireland  
Haifa, Isreal

**JAPAN**

EBARA Corporation Precision Machinery Company  
Headquarters: Fujisawa, Japan  
FSC: Tohoku Fukusima  
Hokuriku Toyama  
Chubu Mie  
Kyuusyuu Fukuoka  
QRC: Kitami Iwate  
Tohoku Miyagi  
Ibaraki  
Chubu Mie  
Osaka  
Hiroshima  
Shikoku Ehime  
Fukuoka  
Oita  
Kumamoto

**KOREA**

EBARA Precision Machinery KOREA INC  
Headquarters: Seoul  
FSC: Mogok-Dong

**CHINA**

Shanghai EBARA Precision Machinery Co., LTD  
Headquarters: Shanghai  
FCS: Shanghai  
QRC: Wuxi

**TAIWAN**

EBARA Precision Machinery TAIWAN INC  
Headquarters: Taipei  
FSC: Hu-ko  
QRC: Linkou  
Taichung  
Tainan

**SINGAPORE**

EBARA Engineering Singapore Pte. Ltd.  
Headquarters: Tuas Link  
FSC: Tuas Link

**Patent Pending**

UL® and C-UL® are registered trademarks of Underwriter's Laboratories, Inc.

"Model EV-A" and "Model EV-SA" are our model codes.

All specifications are subject to change without notice.

© EBARA Technologies , Inc. | 2017 Printed in USA



0182-L1211201, Rev. G